



SheSuite Africa

PROGRAM BROCHURE

www.pawen.org



About the program



SheSuite Africa Program is a transformative 3-month leadership development experience designed for bright and ambitious women of African descent in middle management. It is tailored for those who have demonstrated exceptional functional and technical expertise and are looking to develop the leadership skills, tools and network to rise to the C-suite.



Program Curriculum

SheSuite Africa Programme addresses the many barriers that women must overcome to meet the demands of the modern C-suite executive. It provides a holistic development program on leadership and strategy divided into four learning themes:

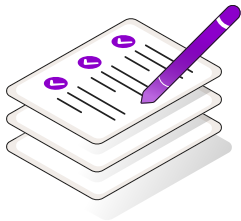
- Leading Self
- Leading Others
- Leading Teams
- Leading Organisations

The learning curriculum has been designed to better equip women with the **Competence, Confidence** and **Connections** to navigate the challenges and gender biases within the workplace and develop the critical skills to become **Authentic, Agile** and **Astute** leaders.



Why should you apply?

1



Personal Development Plan:

Begin with a detailed leadership and behavioural assessment to develop a personalized development plan, guiding you towards becoming a competent and confident leader.

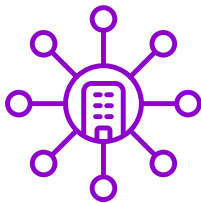
2



Self-Discovery and Growth:

Critically examine your identity and recognize your potential, strengths, and limiting behaviors as a leader. Learn the latest tools, frameworks, and insights necessary to lead your organization through times of change and innovation.

3



Enterprise Mindset:

Develop an enterprise mindset and leadership perspective that goes beyond functional skills, preparing you to navigate and lead through your leadership journey

4



World-Class Faculty:

Learn from top PAWEN faculty—business leaders with experience and expertise from different countries across four continents, who are thought leaders and practitioners well-versed in real-world organizational challenges.

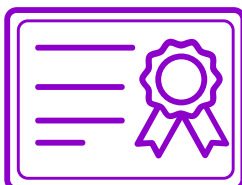
5



Peer learning and Expert mentoring

Benefit from the firsthand knowledge and experiences of high-achieving peers from different African countries. As well as expert mentoring from experienced female business leaders.

6



Certification and Membership:

Receive a certificate upon completion of the program and enjoy a one-year membership in the PAWEN Leadership Academy.

2025 SheSuite Africa Faculty

Click on each Faculty member to learn more about them.



[Oluwaseyi
Kehinde-Peters](#)



[Ogechukwu J.
Anozie](#)



[Olubolajimi
Okubanjo](#)



[Ololade
George-Aremu](#)



[Tomi
Akinyinka](#)



[Fiona
Nuwamanya](#)



[Edememe
Oladiji-Wusu](#)



[Oluwatobi
Boshoro](#)



[Gita Maharaj](#)



[Tofunmi Arikawe](#)



[Yemi Faseun](#)



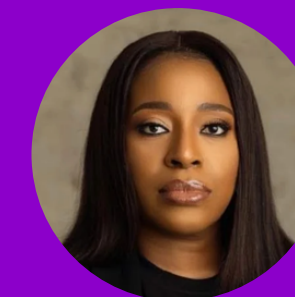
[Nkem Nweke](#)



[Omolola Oloye](#)



[Ina Alogwu](#)



[Napa Onwusah](#)



[Funke Amobi](#)

REAL RESULTS

Don't Just Take Our Word For It...



BELINDA CHAORA

Botswana

“I got a board role within 6 months of completing the SheSuite Africa Program.”

The PAWEN course came at just the right time for me as I navigate my leadership journey into C Suite roles. I found that each session was a building block of another creating a seamless intergration of concepts. Each week one concept would buttress something from the previous week. The masterclasses were led by amazing leaders who honoured us with a wealth of wisdom that I know I would not be able to afford if I approached them one-on-one for similar audience. The confidence I have gained just by listening to other leaders is tangible and I very pleased to have taken part in this course.



YVONNE KIRIGO

Kenya

“The focus on self-reflection and authentic leadership helped me enhance my leadership style”

The She Suite Africa program was a transformative experience that provided a well-structured curriculum covering key leadership areas like emotional intelligence, authentic leadership, and enterprise leadership. The facilitators offered practical insights, while interactive platforms like Kahoot and Google Classroom kept sessions engaging. The networking opportunities with mentors and peers created a valuable support system. Overall, the program equipped me with the competence, confidence, and connections to lead more effectively.



OLUKEMI FEYISITAN

Nigeria

“This program has not only improved my leadership skill but also has equipped me with tools to drive strategic decisions confidently.”

The PAWEN Shesuite program is a game-changer for women leaders aspiring to make a meaningful impact in the corporate world. I was particularly pleased by the high-caliber of facilitators, who contributed a wealth of expertise and knowledge to every session, making each module exciting and genuinely informative.

Thank you PAWEN, if you think transformative leadership, think SheSuite Africa!!!



Program Details

Program Start:
February 28th 2027

Program Fee
~~\$450~~ \$350

Application Deadlines:

Early Bird- December 30th, 2026

Standard - January 31st, 2027

Late- February 15th, 2027

Seats are limited and allocated on a first-come, first-served basis. Only approved applicants will be invited to proceed with payment for the program.

 The entries recorded
Click the button below to apply

APPLY

NOW

 shesuite@pawen.org

 www.pawen.org

WHO IS THIS PROGRAM FOR?

The *SheSuite for Africa* Program is designed for women of African descent who:

Are aspring C-Suite and Senior Management Leaders

Preparing to transition into, or currently occupying, a senior management or C-suite role, and aiming to break through the glass ceiling

Desire professional Leadership Development

Are deliberate about developing their leadership and emotional intelligence skills to navigate the leadership challenges women face.

Seek a global network of peers

Who want to gain confidence in their unique abilities as leaders and seek a global community of peers to network and grow with.