



EMERGING LEADERS AFRICA (ELA)

Program Brochure

www.pawen.org

ABOUT THE PROGRAM



The Emerging Leaders Africa (ELA) Program is a **14-week virtual leadership accelerator** designed by Pan African Women Empowerment Network (PAWEN) to support **emerging African women** as they transition into new leadership roles and strengthen their effectiveness as people managers. Through a highly practical, cohort-based learning experience, the program equips participants with the confidence, competence, and strategic capabilities needed to lead teams, influence stakeholders, navigate workplace dynamics, and accelerate their growth within today's evolving African workplace environment.



ABOUT PAWEN



PAWEN is a non-profit organization that empowers African women with the Competence, Confidence, and Connections to lead in Business, Careers, and in the Boardrooms.

5+

Years of operations

35

Countries

70+

Faculty Network

6000+

Direct beneficiaries



**Oluwaseyi
Kehinde-Peters**
Founder, PAWEN

OUR CORPORATE OBJECTIVES



➤ Vision

A world where every African woman, regardless of her background, is inspired and empowered to maximize her potential, contributing significantly to the prosperity and progress of the African continent and beyond.

➤ Mission

Creating an ecosystem that equips African Women to lead and succeed in Business, Careers, and On Boards through education and empowerment.

➤ Pillars

Our mission revolves around three pillars:

- **Competence:** Our programs are tailored to enhance the professional competencies of African women with practical skills that can be immediately applied in real-world scenarios.
- **Confidence:** By nurturing self-belief and assurance in their abilities, we help African women to overcome barriers and stride confidently towards their goals.
- **Connections:** We are committed to facilitating connections that transcend borders, linking members with a diverse, global community of peers, mentors and coaches. These influential connections are catalysts for growth, opportunity, and leadership.

OUR PROGRAMS



Leadership Development

Our leadership programs empower African women to rise boldly into boardrooms and executive leadership, equipping them with the competence, confidence and connections to lead with impact and authenticity.



SheSuite Africa Program



OnboardHer



Emerging Leaders Africa (ELA) Program



Entrepreneurship Development

Our entrepreneurship programs equip African women to build and scale thriving businesses, providing them with the knowledge, networks, and resources to launch, grow and scale their businesses sustainably and profitably.



Girlpreneur Africa Program (GAP)



Aspiring Entrepreneurs Program (AEP)



ScaleUp Africa Program (SAP)



Wealth & Investment Education

Our wealth and investment programs empower African women to become informed and impactful investors, equipping them with the competence, confidence, and connections to grow wealth and fund innovation across the continent.



Aspiring Angel Investors Program (AAIP)



Awards and Events

Our awards and events bring together Africa's most dynamic women to celebrate success, spark innovation, and build powerful connections—through bold, inspiring events like the PAWENpreneur Awards and Women in Tech Conference.



Women in Tech Conference



The PAWEN Awards



PROGRAM CURRICULUM

The Emerging Leaders Africa Program addresses one of the most critical career transitions professionals face: the shift from **individual contributor** to **effective people leader**. The curriculum is structured around five core learning areas:

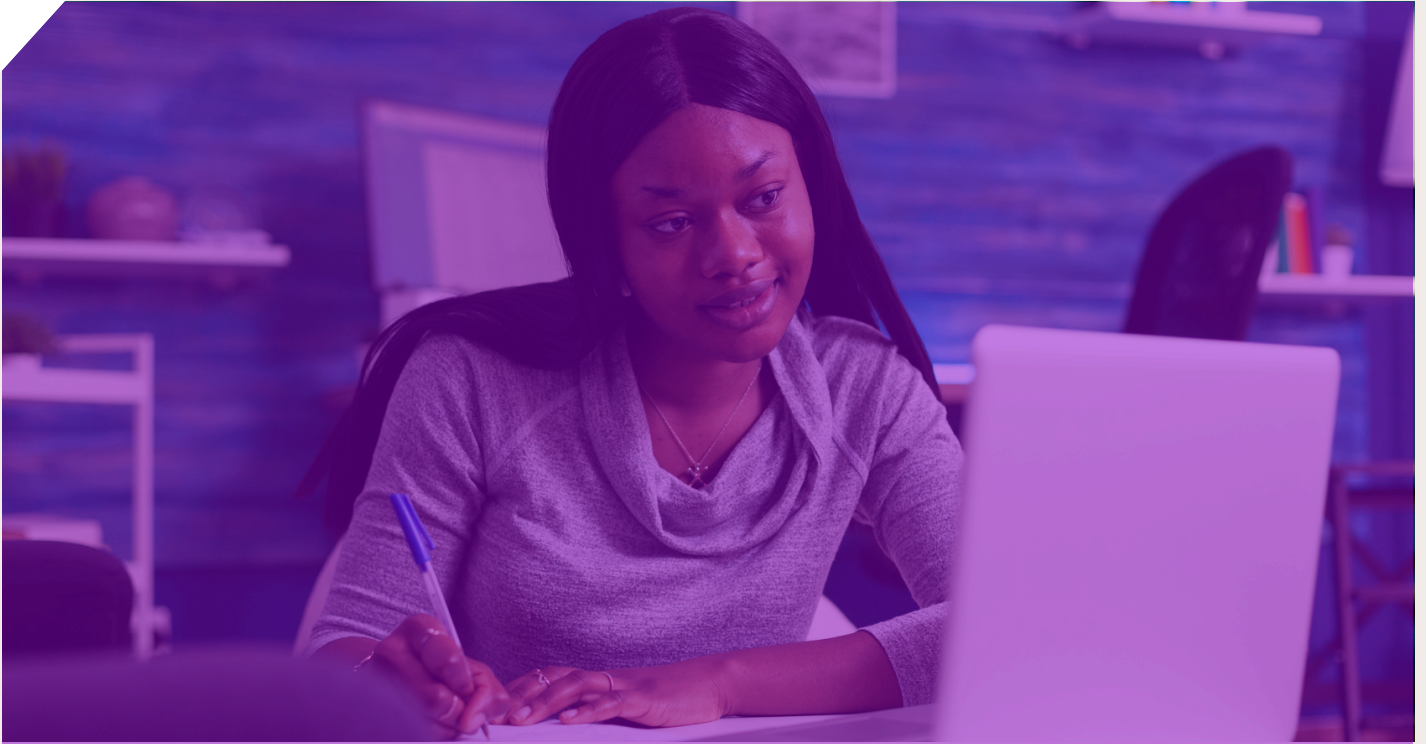
- Leadership Foundations
- Team & Performance Leadership
- Strategic & Organizational Leadership
- Future-Focused Leadership
- Mentorship & Executive Exposure

The learning curriculum has been intentionally designed to equip participants with the **competence, confidence and strategic leadership capability** needed to navigate workplace realities, lead people effectively, strengthen influence, and accelerate long-term leadership growth within modern African workplaces.





PROGRAM STRUCTURE



**Delivery Mode:
Online**



**Mentorship
conversations**



**Executive
leadership sessions**



**Interactive
workshops**



**Weekly live
sessions**



**Peer learning
activities**





WHY SHOULD YOU APPLY?

1



Rooted in African Workplace Realities

The program reflects the realities of leadership within African organizational environments including hierarchy, communication dynamics, authority structures, visibility challenges, and rapid workplace change.

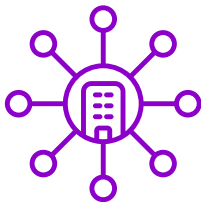
2



Designed for Emerging Women Leaders

The curriculum addresses challenges often experienced by women leaders including confidence gaps, over-functioning, visibility barriers, sponsorship limitations, and leadership perception dynamics.

3



Practical & Workplace-Focused

The program emphasizes application, workplace relevance, and leadership execution rather than abstract leadership theory.

4



Future-Ready Leadership Development

Benefit from the firsthand knowledge and experiences of high-achieving peers from different African countries. As well as expert mentoring from experienced female business leaders.

5



A Long-Term Leadership Pipeline

Participants become part of Pan African Women Empowerment Network (PAWEN) broader leadership ecosystem with opportunities for continued growth through advanced leadership and board readiness programs.

REAL RESULTS

Don't Just Take Our Word For It. Here Is What People Are Saying About Our Programs...



BELINDA CHAORA

Botswana

“I got a board role within 6 months of completing the SheSuite Africa Program.”

The PAWEN course came at just the right time for me as I navigate my leadership journey into C Suite roles. I found that each session was a building block of another creating a seamless intergration of concepts. Each week one concept would buttress something from the previous week. The masterclasses were led by amazing leaders who honoured us with a wealth of wisdom that I know I would not be able to afford if I approached them one-on-one for similar audience. The confidence I have gained just by listening to other leaders is tangible and I very pleased to have taken part in this course.



YVONNE KIRIGO

Kenya

“The focus on self-reflection and authentic leadership helped me enhance my leadership style”

The She Suite Africa program was a transformative experience that provided a well-structured curriculum covering key leadership areas like emotional intelligence, authentic leadership, and enterprise leadership. The facilitators offered practical insights, while interactive platforms like Kahoot and Google Classroom kept sessions engaging. The networking opportunities with mentors and peers created a valuable support system. Overall, the program equipped me with the competence, confidence, and connections to lead more effectively.



OLUKEMI FEYISITAN

Nigeria

“This program has not only improved my leadership skill but also has equipped me with tools to drive strategic decisions confidently.”

The PAWEN Shesuite program is a game-changer for women leaders aspiring to make a meaningful impact in the corporate world. I was particularly pleased by the high-caliber of facilitators, who contributed a wealth of expertise and knowledge to every session, making each module exciting and genuinely informative.

Thank you PAWEN, if you think transformative leadership, think SheSuite Africa!!!

REAL RESULTS

Don't Just Take Our Word For It. Here Is What People Are Saying About Our Programs...



PRISCAR SIKOMBE

Zambia

"I was appointed to a board within 6 months of completing the program."

I enjoyed the opportunity to interact with fellow participants across Africa, learning from their varied viewpoints and experiences through group projects and interactive sessions. These connections have not only broadened my professional network, but have also opened doors to new partnerships and future board chances. I was appointed to a board within 6 months of completing the OnboardHer program.



CAROLINE AGABA

Uganda

"I am sure I made one of the best choices I could for my career."

I am forever indebted to PAWEN for this opportunity. In the beginning I wasn't sure where this journey would lead once I started it. But now I am sure I made one of the best choices I could for my career.

The OnboardHer facilitators were excellent, and they left me with plenty to think about and implement in my career.



DR. MARIE-JAMES SIBE

Nigeria

"The skills and knowledge gained during this program are invaluable and will stay with me forever."

The skills and knowledge gained during the OnboardHer program are invaluable and will stay with me forever. I apply these skills daily at work and in my personal life. Professionally, I have started integrating the lessons learned into building my personal brand and strategic networking initiatives to build an influential network



PROGRAM DETAILS

Program Start Date:

July 4th, 2026

Program Fee:

~~\$250~~ \$150




Application Deadline:

June 19th, 2026

Seats are **limited** and allocated on a first-come, first-served basis. Only approved applicants will be invited to proceed with payment for the program.

WHO IS THIS PROGRAM FOR?

Emerging Leaders Africa Program is designed for African women who:

-  **Are transitioning into leadership roles**
-  **Are leading teams or key projects**
-  **Are preparing for greater leadership responsibility**
-  **Want to strengthen confidence, communication, and influence**
-  **Are committed to accelerating their leadership growth**



Participants come from diverse sectors, including corporate organizations, startups, development organizations, financial institutions, consulting firms, public sector institutions, social enterprises, and entrepreneurial ventures.



We've designed our application process to be simple, clear, and supportive. Apply today and take the next step in your leadership journey.

Apply Online



Review and Selection



Payment

Click the button below to apply

APPLY

NOW



ela@pawen.org



www.pawen.org